

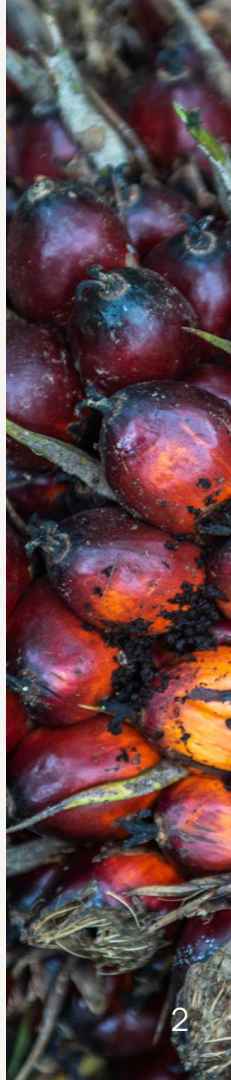
Palm Oil Forest Footprint Analysis

Sabah, Malaysia

December, 2025

Table of Contents

- **Introduction**
 - About the NISSIN FOODS Group - p.3
 - About Satelligence - p.4-5
 - Scope of Work - p.6
- **Methodology**
 - Methodology: Forest Footprint Analysis - p.7
 - Data Sources - p.8
- **Results of Analysis**
 - Sabah Summary: Sourcing Landscapes - p.10
 - Oil Palm Concessions - p.11
 - Customary Land Analysis - p.12
- **Way Forward** - p.13-15



Introduction

About the NISSIN FOODS Group

The NISSIN FOODS Group is a comprehensive food company engaged in the manufacture and sale of a broad range of products, including instant noodles, chilled and frozen foods, beverages, and confectionery/snacks. Under its corporate philosophy, EARTH FOOD CREATOR, the Group seeks to create social value through food.

Sustainable Procurement

Based on the NISSIN FOODS Group Policy on Sustainable Procurement and the Supplier Code of Conduct, the Group promotes procurement activities that emphasize environmental conservation, respect for human rights, and compliance with laws and regulations. For key raw materials associated with deforestation risk, the Group takes actions guided by the principles of No Deforestation, No Peat, and No Exploitation (NDPE), with the aim of achieving zero deforestation across its procurement supply chains.

As part of these efforts, the Group conducted a forest footprint analysis of its palm oil supply chain using satellite data and other sources. Through the analysis and disclosure of forest footprint information, the Group aims to objectively identify risks and challenges and to link these insights to supplier engagement and continuous improvement.



Introduction

About Satelligence (1/2)

Satelligence is a satellite-powered geospatial intelligence company that helps organizations understand, manage, and reduce their environmental impact across global supply chains. By combining satellite imagery, advanced analytics, and environmental science, Satelligence delivers real-time, spatially explicit insights into agricultural production and supply chain risks, including deforestation, land-use change, biodiversity impacts, and carbon emissions and removals.

Satelligence empowers leading companies – including the NISSIN FOODS Group, Cargill, Unilever, Mondelez, Bunge, Nestlé, PepsiCo, and Tony's Chocolonely – to measure, manage, and mitigate their nature and climate commitments while strengthening supply chain resilience and long-term profitability. With offices in Utrecht, Jakarta, Abidjan, and São Paulo, Satelligence operates globally while remaining deeply grounded in local contexts where environmental and social impacts are most material.



Introduction

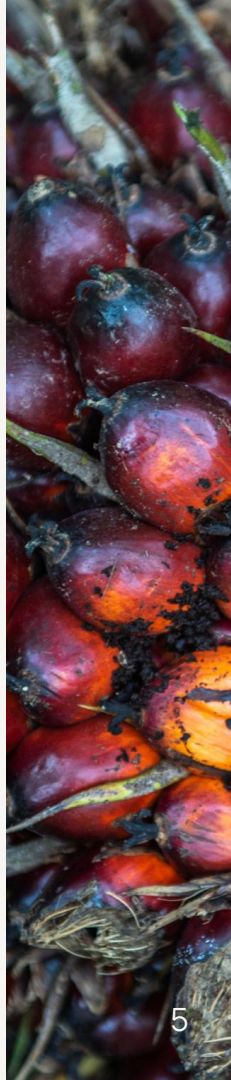
About Satelligence (2/2)

About the satellite monitoring and footprint analysis service

Satelligence provides satellite-based monitoring and environmental footprint analysis to assess land-use change, deforestation, and associated greenhouse gas emissions linked to agricultural and forest-risk commodity supply chains. The service enables organizations to map sourcing areas, monitor changes over time, and quantify environmental impacts at a spatially explicit level. This supports compliance with regulatory and voluntary requirements, such as deforestation-free sourcing policies, climate reporting frameworks, and emerging nature-related disclosure standards.

Strength of Satelligence's technology

Satelligence's technology combines high-resolution satellite imagery, machine-learning algorithms, and scientifically robust methodologies to deliver consistent, traceable, and audit-ready insights. The platform integrates multiple data sources and applies standardized, transparent methods to ensure reliability across geographies and time. By linking land-use dynamics directly to supply chain footprints, Satelligence's technology enables organizations to identify risks early, track progress, and demonstrate environmental performance with confidence.



Scope of Work

The NISSIN FOODS Group has demonstrated an increasing commitment to enhancing the traceability of their palm oil supply chain. This has included efforts to build supplier capacity to adhere to the Group's sustainability policies, promote the certification of materials, and support landscape-level initiatives within their sourcing regions.

Satelligence has been assisting the evaluation of No Deforestation, No Peat, No Exploitation (NDPE) compliance at the mill level within the NISSIN FOODS Group's supply chain for the past years through near-real time monitoring. Our analysis aims to provide a comprehensive understanding of the risks to forest and peatland preservation within the direct sourcing landscapes.

With data-driven insights into these risks, Satelligence aims to empower the NISSIN FOODS Group to implement targeted actions that safeguard the livelihoods of local populations and protect the critical forest ecosystems upon which they and native species depend.

This forest footprint analysis focuses specifically on the NISSIN FOODS Group's palm oil supply chain within Sabah, Malaysia.



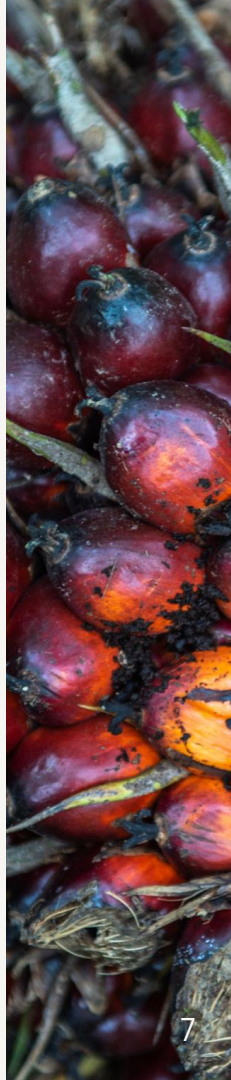
Methodology

Forest Footprint Analysis

Satelligence examined the NISSIN FOODS Group's palm oil supply chain in Sabah, Malaysia.

The geographical scope is defined as a region within Sabah surrounding all known oil palm mills from the NISSIN FOODS Group's November 2025 mill list. Within these defined regions, we integrated spatial data for palm concessions and peatlands, using recognized industry-standard datasets.

We also derived remaining forest cover and oil palm production areas from Satelligence's own forest and commodity baselines. We've created maps of Sabah to illustrate the distribution of key datasets.



Data Sources

Component

Data source

Satelligence change detection

- Multi-temporal stack of radar and optical imagery from ESA and NASA (Landsat-5,7,8,9, Sentinel-1 and Sentinel-2) resampled to 10m pixel size for years 2001 to now

Satelligence forest baseline

- Harmonized assembly of existing forest cover datasets such as JRC TMF, Hansen Treecover, GLAD UMD Global Tree cover and regional forest datasets
- Satelligence forest and commodity maps from multi-temporal stack of radar and optical imagery from ESA (Sentinel-1 and Sentinel-2) for 2016-2024

Peatlands

- Peat soils as defined by Wetlands International and Center for International Forestry Research (CIFOR)

Protected areas

- [World Database on Protected Areas \(WDPA\)](#)

Oil palm concessions

- Harmonized database of concessions and smallholders from geoRSPO, Greenpeace, WRI and in-house mapping efforts by Satelligence and data collection by partners

Oil palm mills

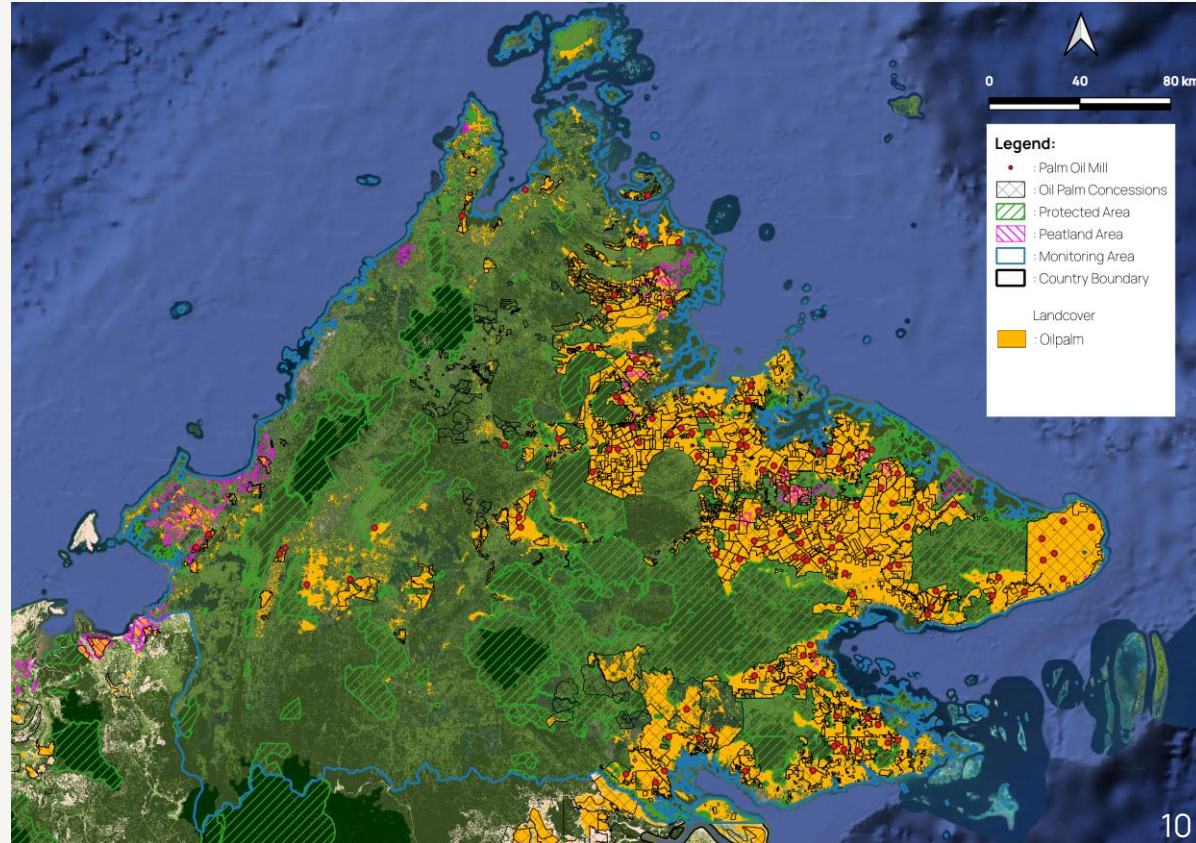
- Latest the NISSIN FOODS Group oil palm mill list for Sabah (Nov 2025)



Sabah Summary

Sourcing Landscapes

- The analysis includes 122 mills that supply to the NISSIN FOODS Group in Sabah, Malaysia.
- There are 982 known oil palm concessions within a 50 km radius of these mills.
- As of 2024, the total oil palm plantation area in Sabah State is 1,353,868 hectares.
- Within the NISSIN FOODS Group's Sabah sourcing regions:
 - Peatland areas cover 140,212 hectares
 - Protected areas total 1,780,049 hectares

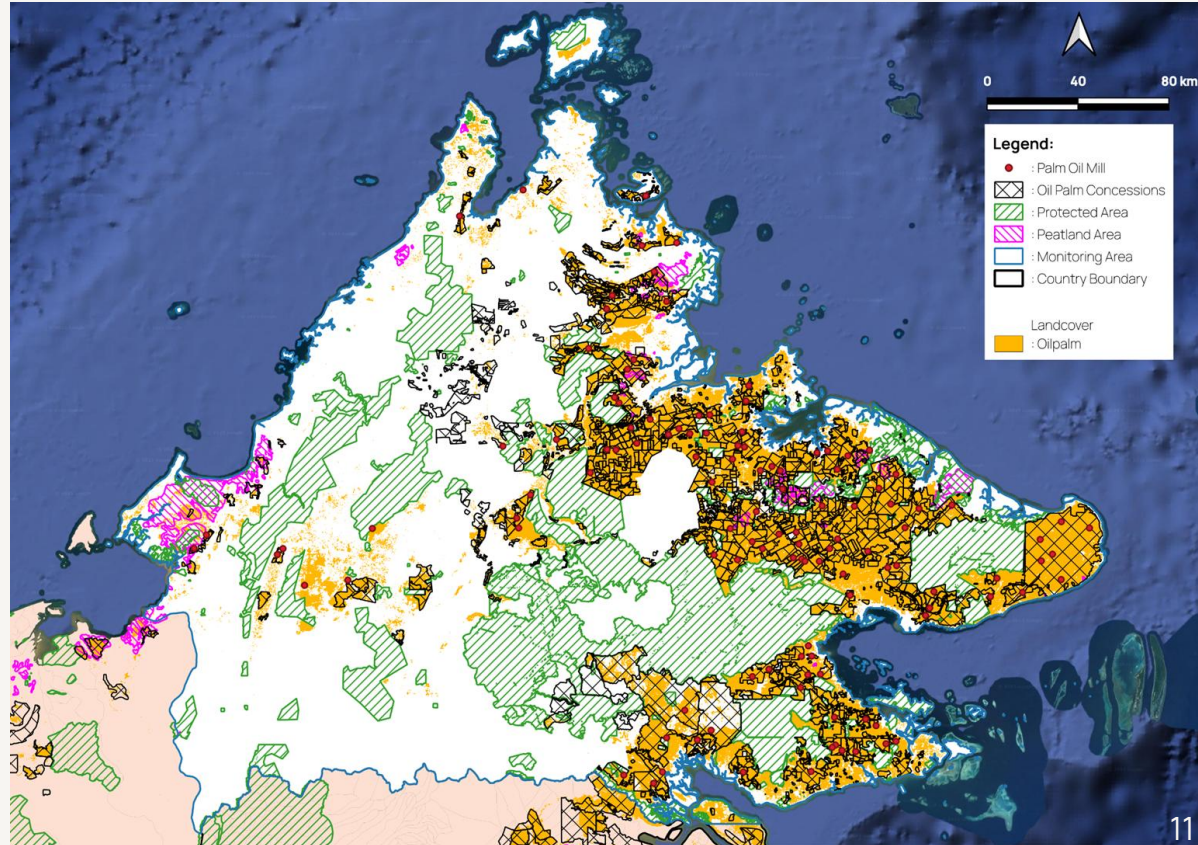


Oil Palm Concessions

- Within the radii of the NISSIN FOODS Group's mills in Sabah, Malaysia, a total of 982 unique concessions have been identified, collectively covering 1.3 million hectares.
- Currently, 117,780 hectares*1 of forest within these concessions remain in areas with a prevalence of deforestation and potential future conversion.*2

*1 This analysis considers peatland within forest-covered areas, incorporating peatland that overlaps with forest cover into the forest-based deforestation risk assessment.

*2 This refers to remaining forest and peatland located within landscapes where past deforestation has been detected. The presence of potential deforestation drivers, such as nearby oil palm plantations, indicates a risk of further forest loss without effective management.



Customary Land Analysis

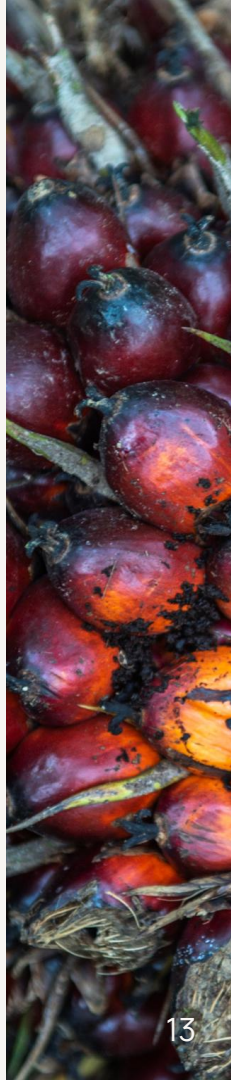
- Satelligence’s Customary Land Analysis is based on LandMark data (Ref. “Data Sources”, p.8), with a specific focus on territories that are legally acknowledged by government authorities.
- Categories classified as “not acknowledged by government” are intentionally excluded in order to align the assessment with formal regulatory compliance frameworks, such as the EU Deforestation Regulation (EUDR), where legal certainty is a key consideration.
- As a result of this methodological scope—and given that the LandMark dataset currently indicates no legally recognized Indigenous Peoples’ territories within Sabah—no spatial overlaps were identified in the final analysis.



Way Forward (1/3)

The NISSIN FOODS Group recognizes that environmental risks—such as deforestation, peatland conversion, and impacts on biodiversity—exist in Sabah, Malaysia, which is one of our key palm oil sourcing regions. To deepen our understanding of these challenges, the Group worked with an independent third-party expert organization, Satelligence, to conduct a forest footprint analysis covering our palm oil supply chain in Sabah. Through this analysis, we found that while forests, peatlands, and protected areas are widely present, there are also forest areas where future conversion risks remain, as well as areas that require ongoing management and monitoring.

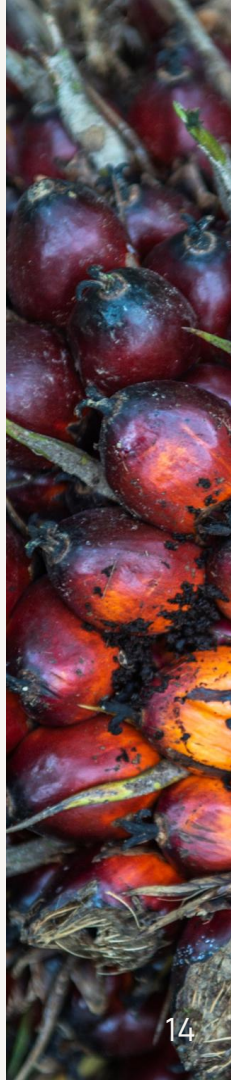
The Group has been working to understand forest conditions and visualize risks in Sabah by developing and managing mill lists and utilizing satellite monitoring. In cases where risks related to deforestation or human rights are suspected, we have collaborated with oil and fat manufacturers and external experts to verify facts and conduct field investigations, and have taken actions that may include corrective guidance and, where necessary, suspension of transactions. While these efforts have led to a certain level of progress, we also recognize that challenges remain in sufficiently covering the entire supply chain.



Way Forward (2/3)

Based on the findings from the Sabah analysis, the NISSIN FOODS Group will continue existing satellite monitoring and dialogue with suppliers, while further advancing the early identification of forest conversion risks and corrective actions, including suspension of transactions. At the same time, for forest areas where future conversion risks remain, we will work with more upstream stakeholders as well, and consider effective measures to prevent conversion.

In addition, in 2026, the Group participated in the verification of a regional, inclusive “landscape approach” in Sabah, in collaboration with related companies and local stakeholders, including relevant Sabah government agencies. Through this initiative, we will advance the introduction of regenerative agriculture, the development of sustainable production systems, and the quantitative understanding of impacts on greenhouse gas emissions and biodiversity, while carefully assessing both effectiveness and challenges.



Way Forward (3/3)

The NISSIN FOODS Group plans to progressively expand the scope of forest footprint analyses and risk assessments, prioritizing sourcing regions based on factors such as the level of environmental and human rights-related risks and procurement volumes.

Going forward, we will continue to place emphasis on dialogue with our supply chain partners and local communities, while appropriately disclosing both our progress and remaining challenges, and continuously strengthening our efforts toward the realization of deforestation-free supply chains.

